



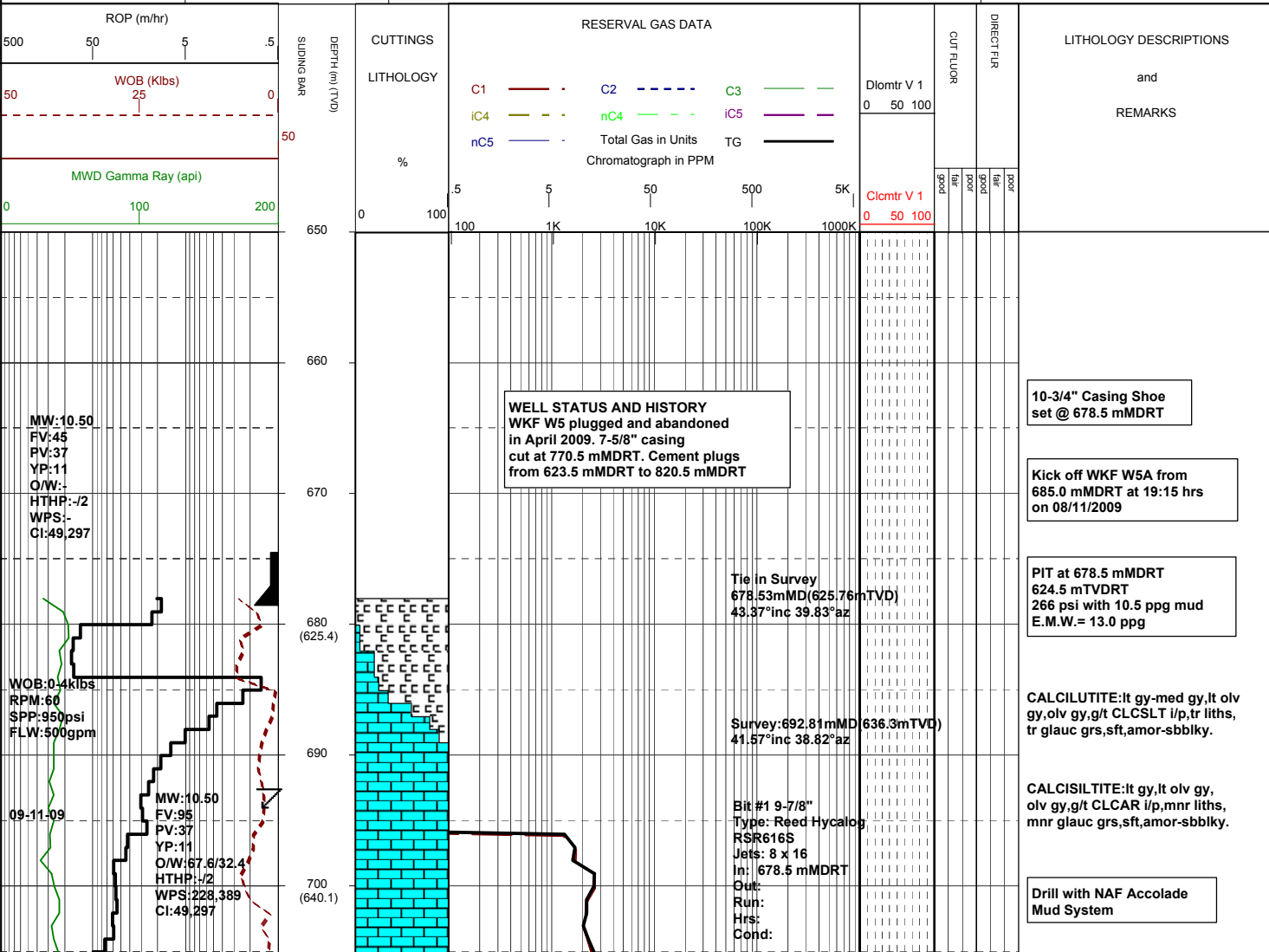
# MASTERLOG

## WKF W5A



GENERAL	SURFACE POSITION	HOLE / CASING INFO	DATE / DEPTH	ENGINEERS
Country : AUSTRALIA	Longitude : E 148 06 19.676	9-7/8" Hole to  10-3/4" Surface Csg at 678.5 mMDRT  7" Production Csg at	Kick off Date: 08/11/2009	Gareth Munro Dan Dennis Colin Chadwick Mark Smith Adam Sullivan Kepa O'Reilly
Permit : VIC L7	Latitude : S 38 35 34.704		Total Depth Date:	
Field : Kingfish	MGA Co-ord X :596271.558mE		Total Depth:	
Basin : GIPPSLAND	MGA Co-ord Y : 5727810.660 mN		True Vertical Depth:	
Well Type :DEVELOPMENT	RT to MSL : 41.73 m		Log Scale : 1/ 500	
Rig Name : Nabors 175	RT to Sea Bed : 118.73 m			

ABBREVIATIONS	LITHOLOGY LEGEND	ENGINEERING LEGEND
MW Mud Weight	Claystone	Casing shoe
FV Funnel Viscosity	Siltstone	Casing top
PV Plastic Viscosity	Sandstone	Survey
YP Yield Point	Shale	MDT
O/W Oil/Water Ratio	Conglomerate	Sliding bar
WPS Aq. Phase Salinity	Marl	Sidewall core
HPHT Fluid Loss	Limestone	Core
Cl Chlorides	Dolomite	Mud gain
Incl Inclination	Coal-lignite	Mud loss
Az Azimuth	Volcanics	
	Bryozoa	
	Radiolariae	
	Echinoids	
	Foraminiferae	
	Cement	
	Glauconite	
	Pyrite	





WOB:5-22kibs  
RPM:139  
SPP:2010psi  
FLW:639gpm

850  
860 (753.8)  
870  
880 (767.7)  
890  
900 (781.6)  
910  
920 (795.6)  
930  
940 (809.5)  
950  
960 (823.4)  
970

MW:11.40  
FV:77  
PV:35  
YP:16  
O/W:68.9/31.1  
HTHP:-/2  
WPS:233,150  
CI:46,914

WOB:5-16kibs  
RPM:138  
SPP:1920psi  
FLW:707gpm

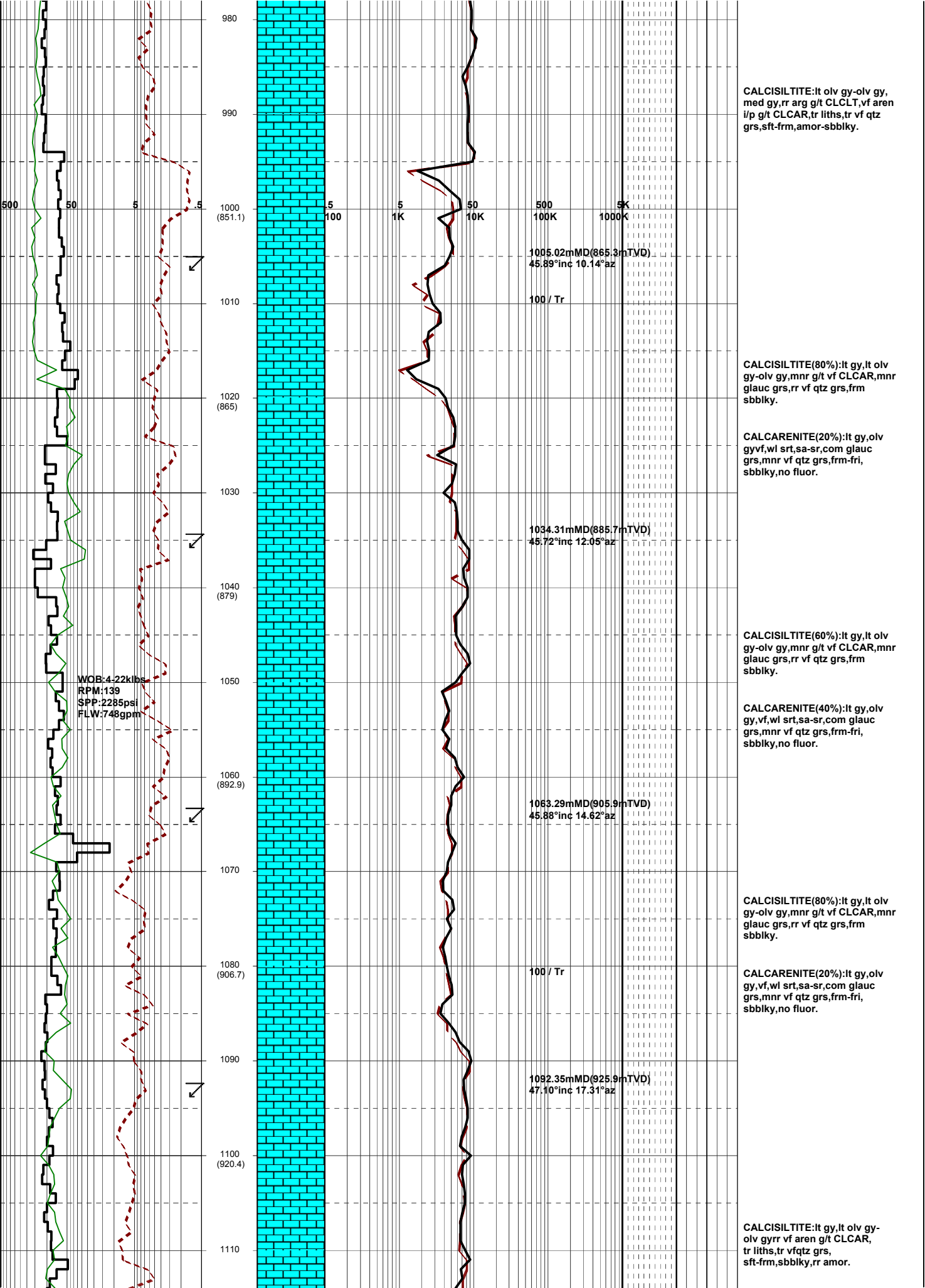
100 / Tr  
859.15mMD(763.9mTVD)  
45.76°inc 18.88°az  
888.33mMD(784.2mTVD)  
46.00°inc 15.41°az  
100 / Tr  
917.16mMD(804.3mTVD)  
45.88°inc 13.47°az  
946.38mMD(824.6mTVD)  
45.97°inc 13.25°az  
100 / Tr  
975.58mMD(844.9mTVD)  
46.21°inc 11.80°az

CALCILUTITE:lt olv gy-olv gy,  
med gy,g/t CLCSLT i/p, tr liths,  
tr vf qtz grs, tr carb spks, sft-  
frm, sbbly-bly.

CALCILUTITE:lt olv gy-olv gy,  
slt g/t CLCSLT, tr liths,  
tr vf qtz grs, tr vf glauc grs,  
tr shell frags, sft-frm,  
amor-sbbly.

CALCILUTITE:lt olv gy-olv gy,  
slt g/t CLCSLT, tr liths, tr vf  
glauc grs, tr shell frags, sft-frm,  
amor-sbbly.

CALCILUTITE:lt olv gy-olv gy,  
slt g/t CLCSLT, tr liths, tr vf  
glauc grs, tr shell frags, tr vf  
qtz grs, sft-frm, amor-sbbly.



CALCISILTITE:lt olv gy-olv gy, med gy,rr arg g/t CLCLT,vf aren l/p g/t CLCAR,tr liths,tr vf qtz grs,sft-frm,amor-sbbkly.

CALCISILTITE(80%):lt gy,lt olv gy-vf, wl srt,sa-sr,com glauc grs,mnr vf qtz grs,frm sbbkly.

CALCARENITE(20%):lt gy,olv gy,vf, wl srt,sa-sr,com glauc grs,mnr vf qtz grs,frm-fri, sbbkly,no fluor.

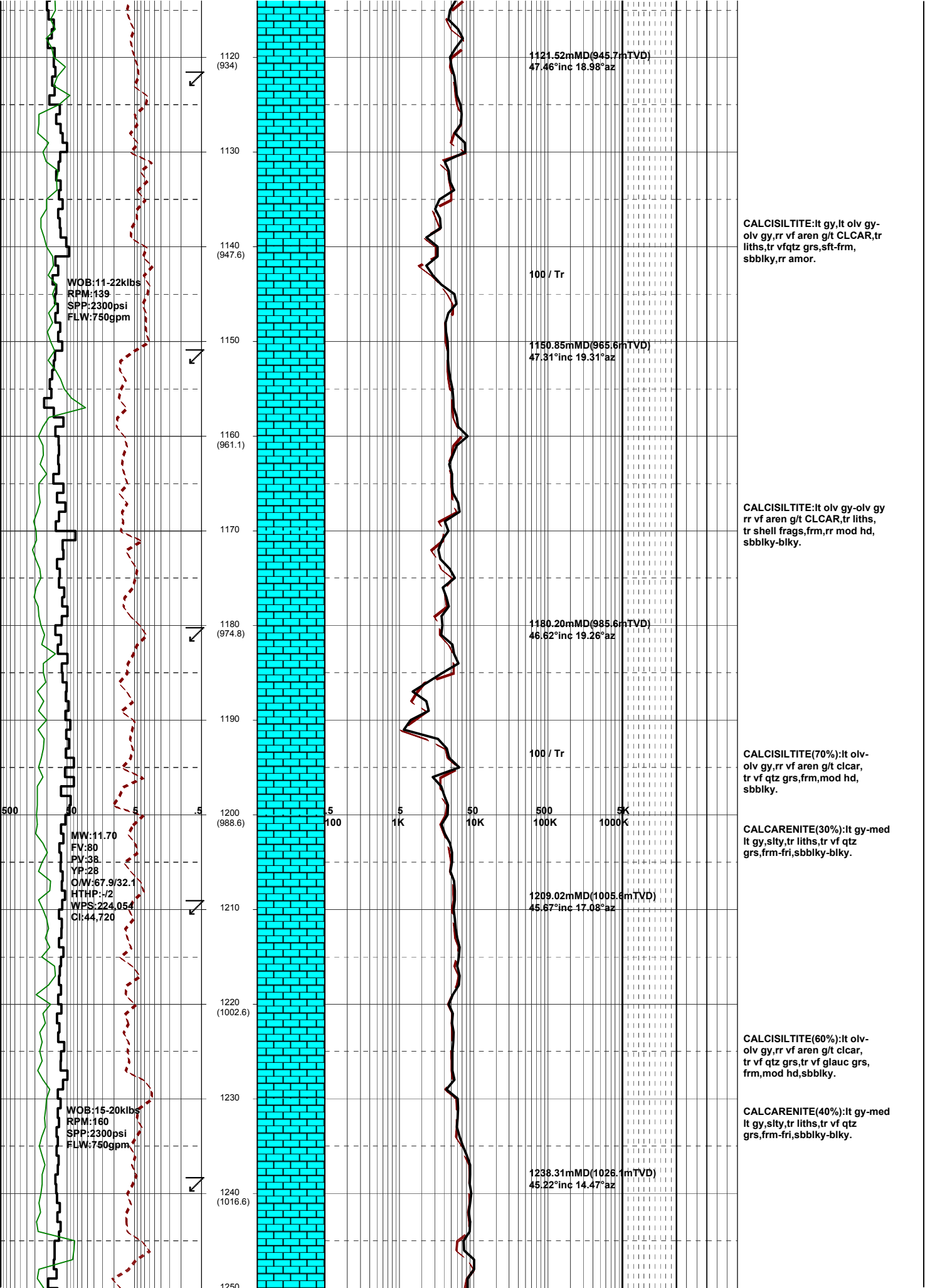
CALCISILTITE(60%):lt gy,lt olv gy-olv gy,mnr g/t vf CLCAR,mnr glauc grs,rr vf qtz grs,frm sbbkly.

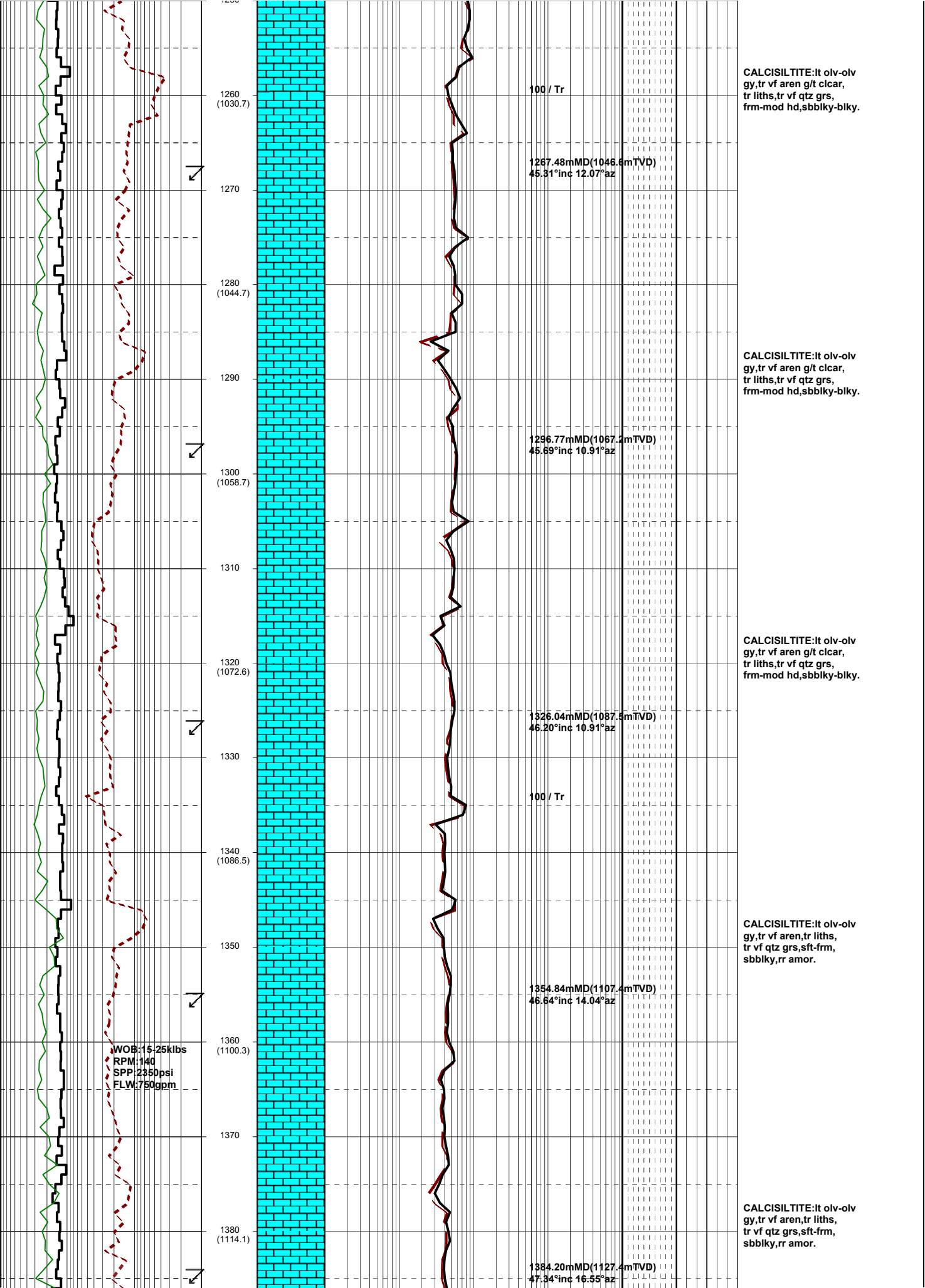
CALCARENITE(40%):lt gy,olv gy,vf, wl srt,sa-sr,com glauc grs,mnr vf qtz grs,frm-fri, sbbkly,no fluor.

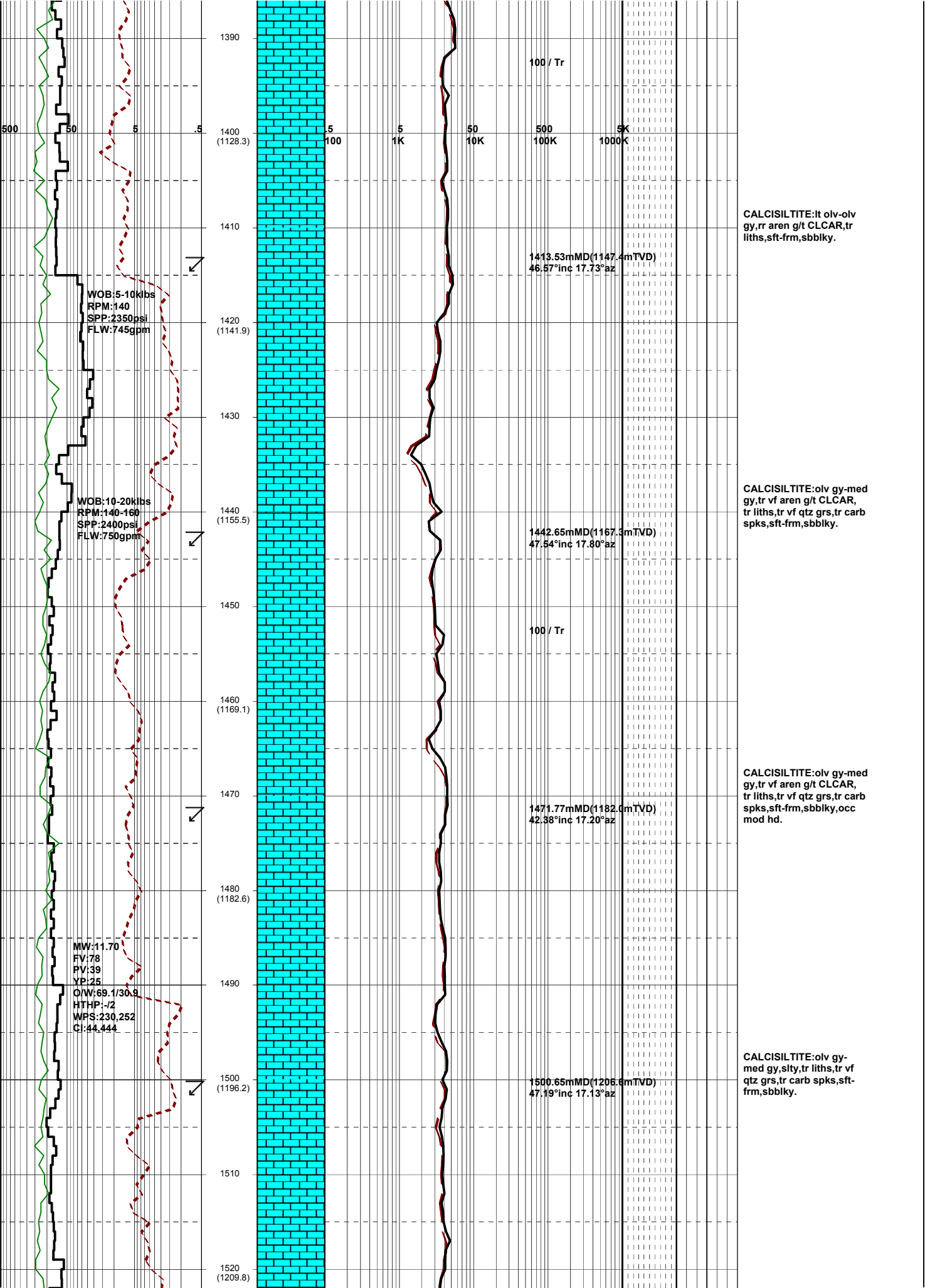
CALCISILTITE(80%):lt gy,lt olv gy-olv gy,mnr g/t vf CLCAR,mnr glauc grs,rr vf qtz grs,frm sbbkly.

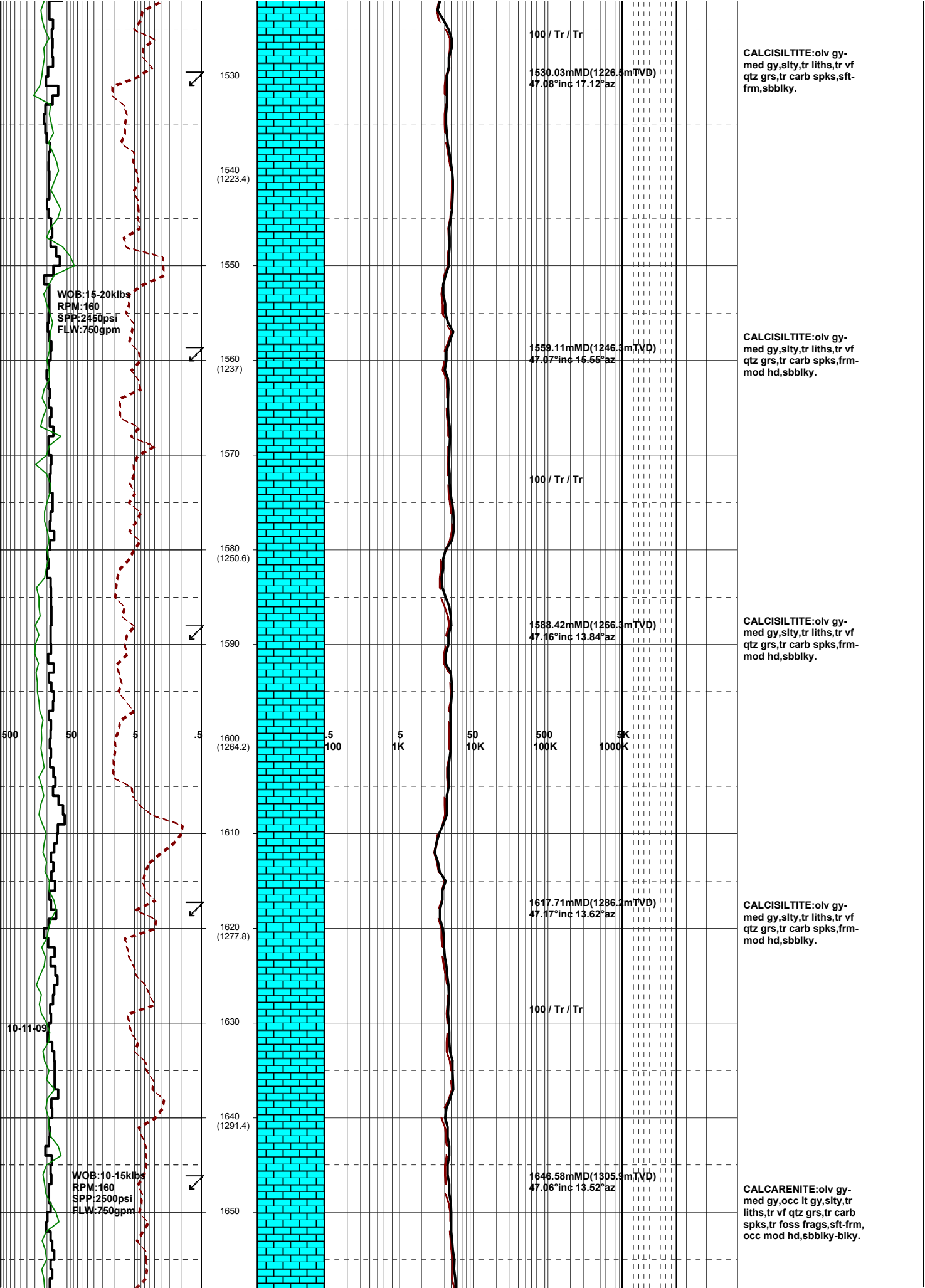
CALCARENITE(20%):lt gy,olv gy,vf, wl srt,sa-sr,com glauc grs,mnr vf qtz grs,frm-fri, sbbkly,no fluor.

CALCISILTITE:lt gy,lt olv gy-olv gy,rr vf aren g/t CLCAR, tr liths,tr vf qtz grs, sft-frm,sbbkly,rr amor.









100 / Tr / Tr

1530.03mMD(1228.5mTVD)  
47.08°inc 17.12°az

CALCISILTITE:olv gy-med gy,silty,tr liths,tr vf qtz grs,tr carb spks,sft-frm,sbbلكy.

1530

1540  
(1223.4)

1550

WOB:15-20kips  
RPM:160  
SPP:2450psi  
FLW:750gpm

1560  
(1237)

1559.11mMD(1245.3mTVD)  
47.07°inc 16.65°az

CALCISILTITE:olv gy-med gy,silty,tr liths,tr vf qtz grs,tr carb spks,frm-mod hd,sbbلكy.

1570

100 / Tr / Tr

1580  
(1250.6)

1588.42mMD(1268.3mTVD)  
47.16°inc 13.84°az

CALCISILTITE:olv gy-med gy,silty,tr liths,tr vf qtz grs,tr carb spks,frm-mod hd,sbbلكy.

1590

500 50 5 .5

5 5 50 500 5K  
100 1K 10K 100K 1000K

1600  
(1264.2)

1610

1617.71mMD(1288.2mTVD)  
47.17°inc 13.62°az

CALCISILTITE:olv gy-med gy,silty,tr liths,tr vf qtz grs,tr carb spks,frm-mod hd,sbbلكy.

1620  
(1277.8)

100 / Tr / Tr

10-11-09

1630

1640  
(1291.4)

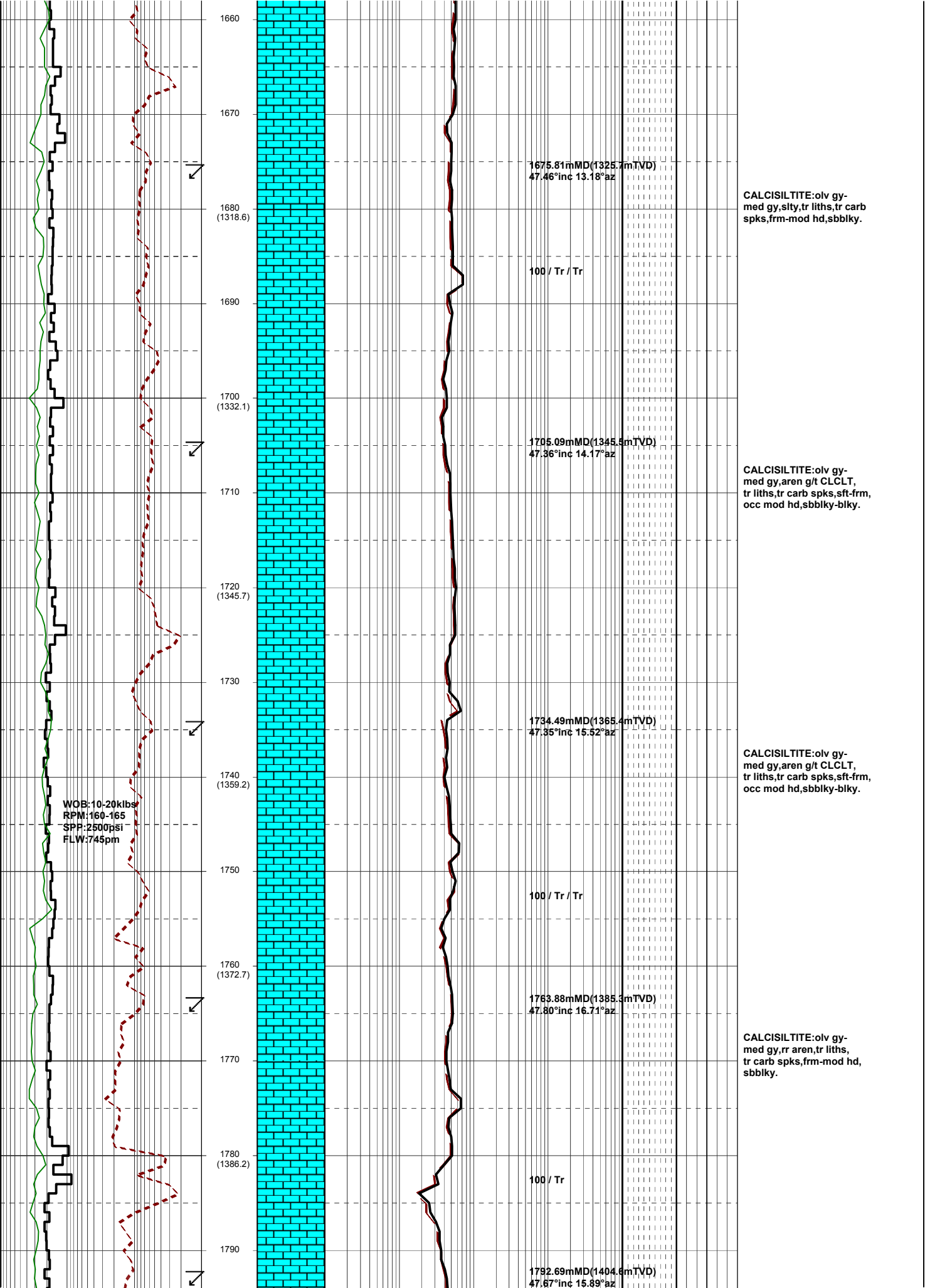
1646.58mMD(1305.5mTVD)  
47.06°inc 13.52°az

CALCARENITE:olv gy-med gy,occ lt gy,silty,tr liths,tr vf qtz grs,tr carb spks,tr foss frags,sft-frm, occ mod hd,sbbلكy-blky.

1650

WOB:10-15kips  
RPM:160  
SPP:2500psi  
FLW:750gpm





WOB:10-20kbs  
 RPM:160-165  
 SPP:2500psi  
 FLW:745pm

1675.81mMD(1325.7mTVD)  
 47.46°inc 13.18°az

CALCISILTITE:olv gy-med gy,silty,tr liths,tr carb spks,frm-mod hd,sbbiky.

100 / Tr / Tr

1705.09mMD(1345.5mTVD)  
 47.36°inc 14.17°az

CALCISILTITE:olv gy-med gy,aren g/t CLCLT, tr liths,tr carb spks,sft-frm, occ mod hd,sbbiky-blky.

1734.49mMD(1365.4mTVD)  
 47.35°inc 15.52°az

CALCISILTITE:olv gy-med gy,aren g/t CLCLT, tr liths,tr carb spks,sft-frm, occ mod hd,sbbiky-blky.

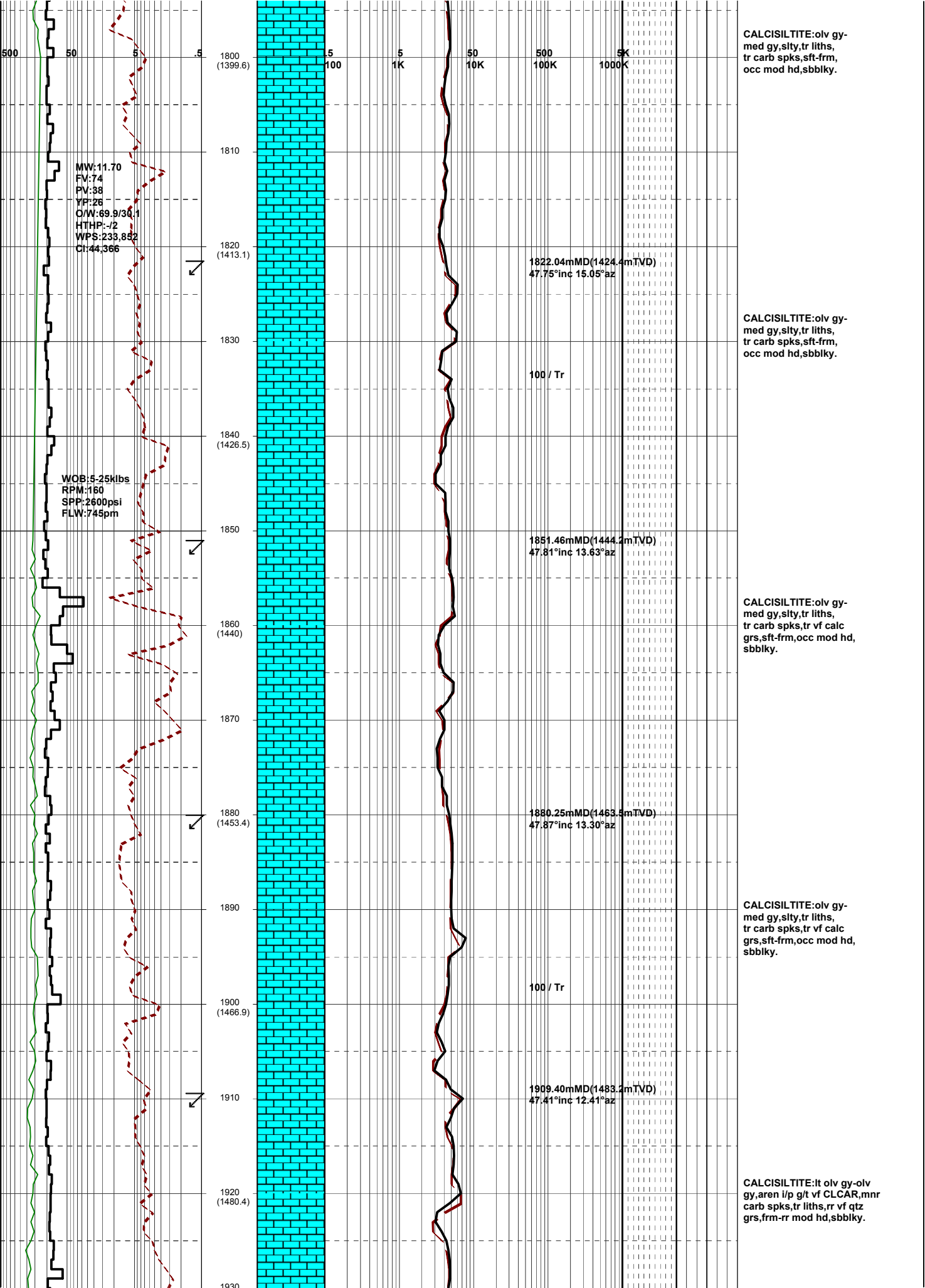
100 / Tr / Tr

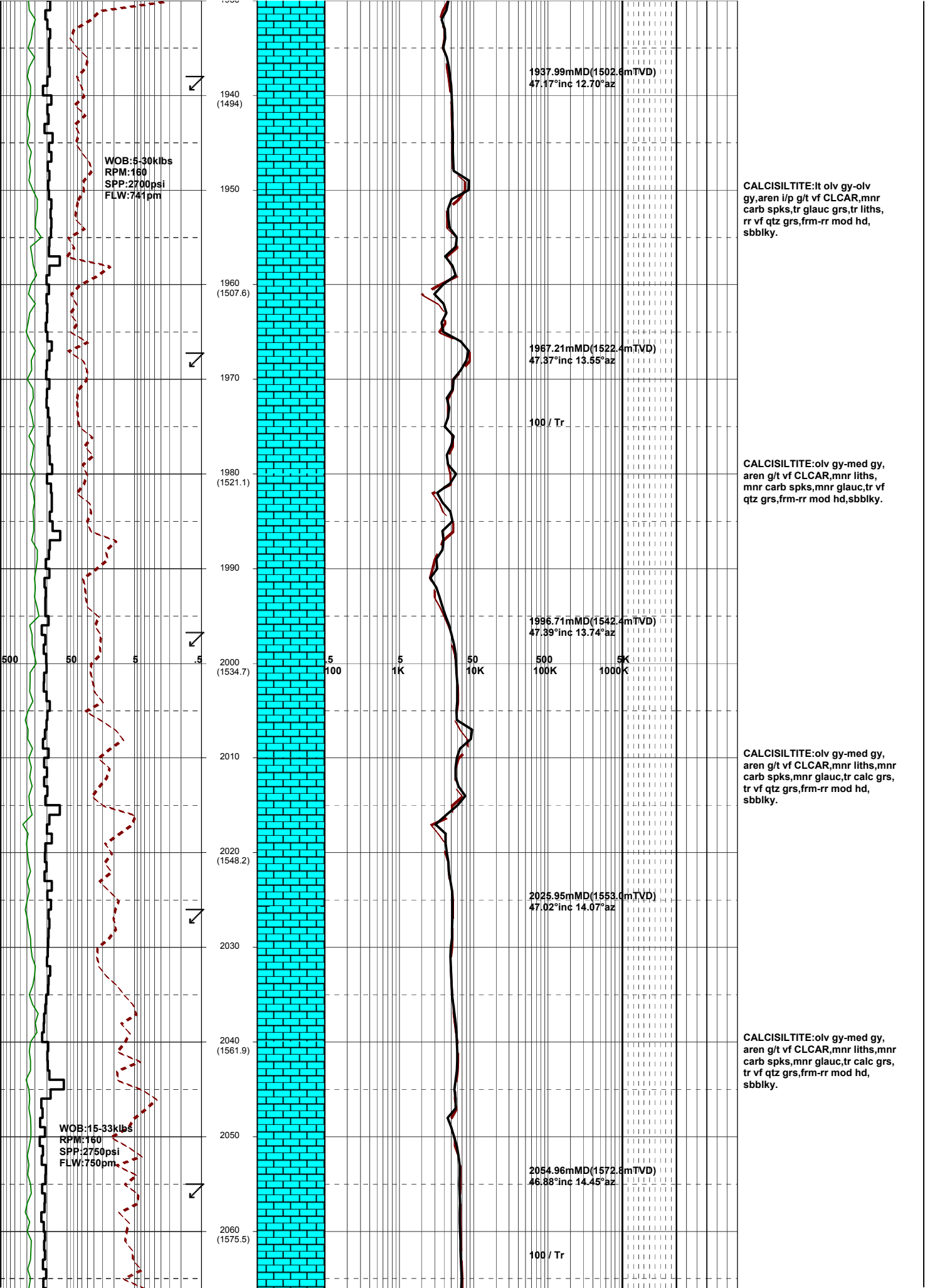
1763.88mMD(1385.3mTVD)  
 47.80°inc 16.71°az

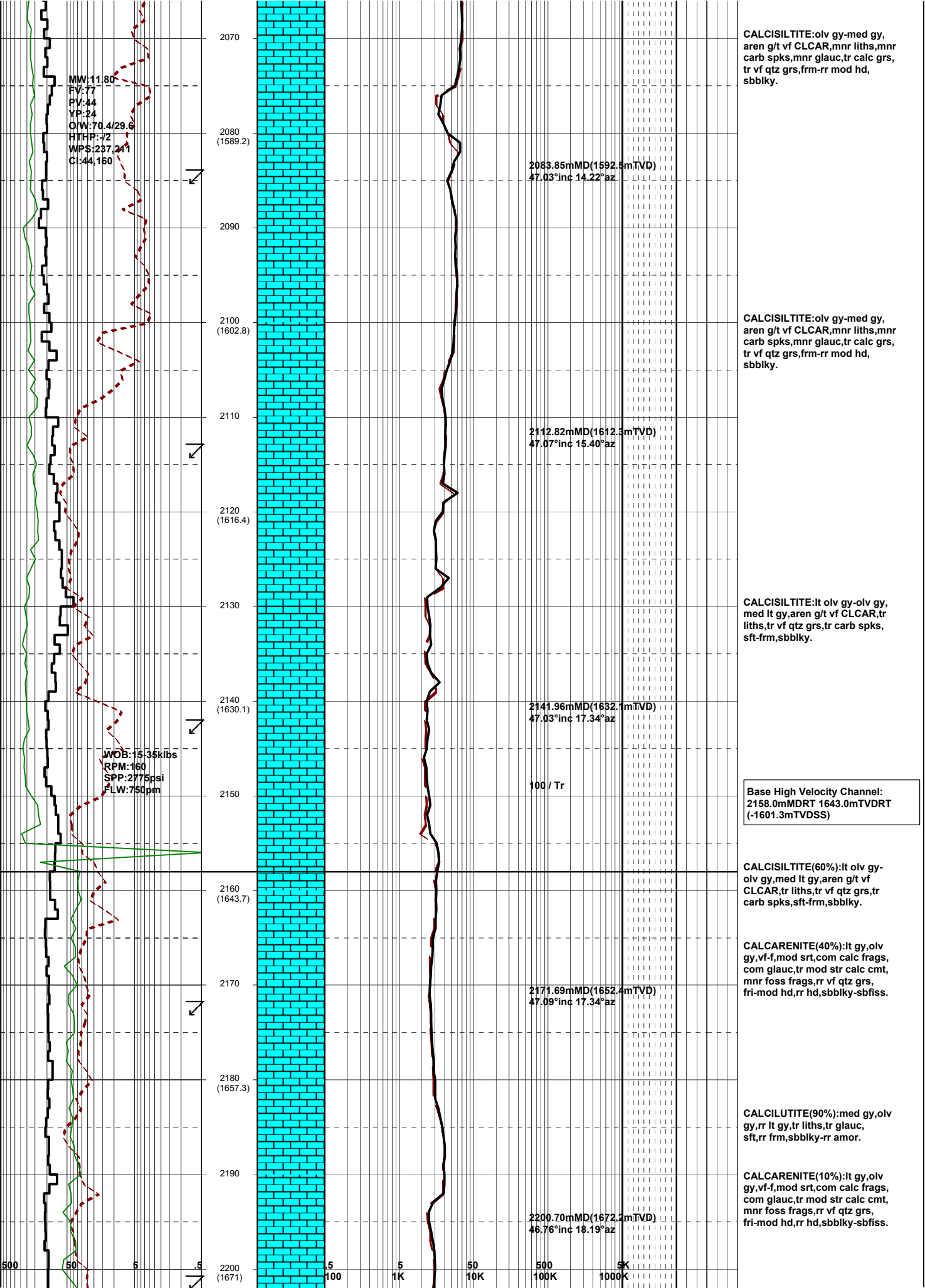
CALCISILTITE:olv gy-med gy,rr aren,tr liths, tr carb spks,frm-mod hd, sbbiky.

100 / Tr

1792.69mMD(1404.6mTVD)  
 47.67°inc 15.89°az







MW:11.80  
 FV:77  
 PV:44  
 YP:24  
 OIW:70.4/29.6  
 HTHP:-72  
 WPS:237.211  
 CI:44,160

WOB:15.35kibs  
 RPM:160  
 SPP:2775psi  
 FLW:750pm

2070  
 2080 (1589.2)  
 2090  
 2100 (1602.8)  
 2110  
 2120 (1616.4)  
 2130  
 2140 (1630.1)  
 2150  
 2160 (1643.7)  
 2170  
 2180 (1657.3)  
 2190  
 2200 (1671)

2083.85mMD(1592.5mTVD)  
 47.03°inc 14.22°az

2112.82mMD(1612.3mTVD)  
 47.07°inc 15.40°az

2141.96mMD(1632.1mTVD)  
 47.03°inc 17.34°az

100 / Tr

2171.69mMD(1652.4mTVD)  
 47.09°inc 17.34°az

2200.70mMD(1672.2mTVD)  
 46.76°inc 18.19°az

CALCISILTITE:olv gy-med gy, aren g/t vf CLCAR,mnr liths,mnr carb spks,mnr glauc,tr calc grs, tr vf qtz grs,frm-rr mod hd, sbbkly.

CALCISILTITE:olv gy-med gy, aren g/t vf CLCAR,mnr liths,mnr carb spks,mnr glauc,tr calc grs, tr vf qtz grs,frm-rr mod hd, sbbkly.

CALCISILTITE:lt olv gy-olv gy, med lt gy,aren g/t vf CLCAR,tr liths,tr vf qtz grs,tr carb spks, sft-frm,sbbkly.

Base High Velocity Channel:  
 2158.0mMDRT 1643.0mTVDRT  
 (-1601.3mTVSS)

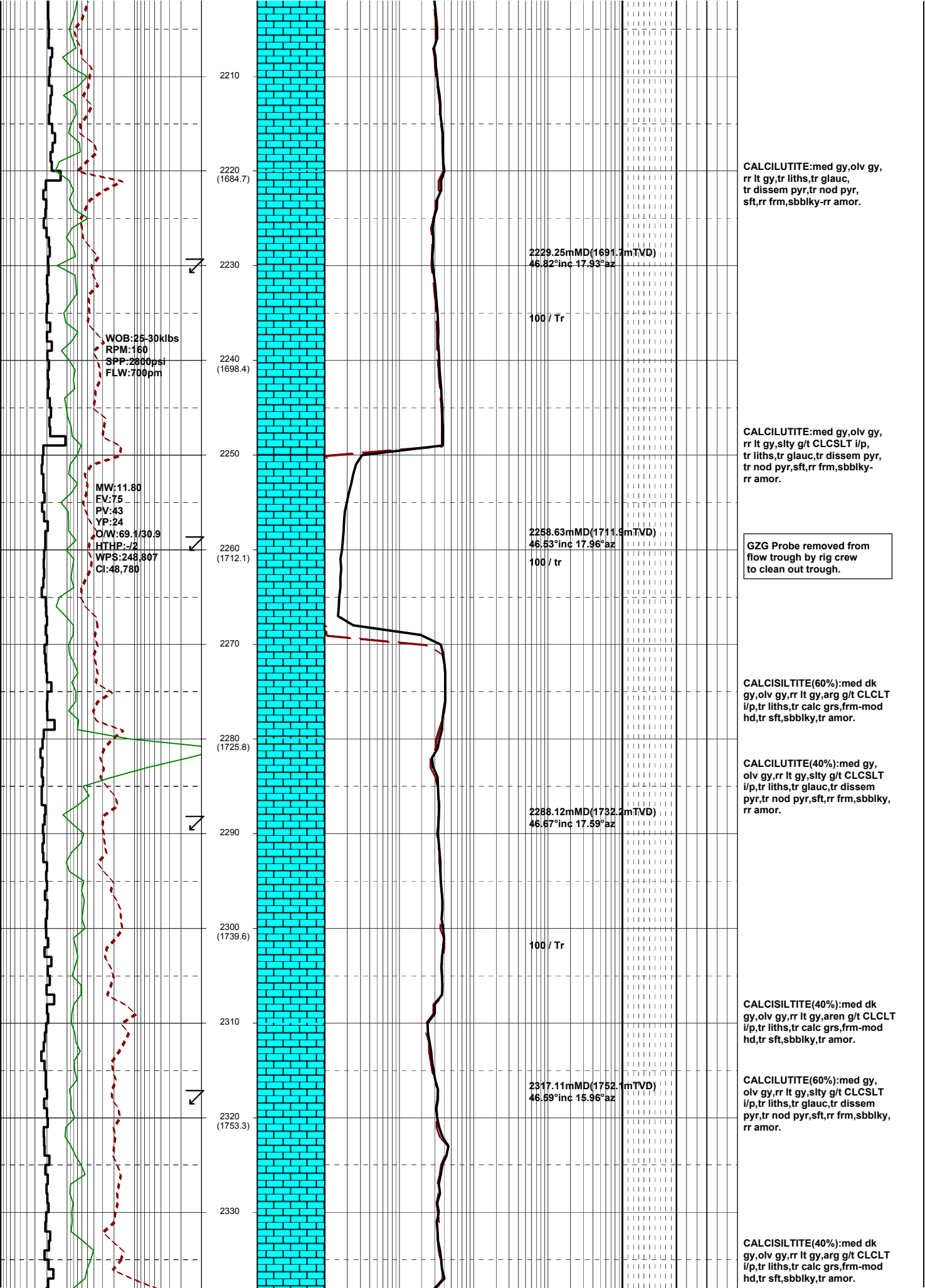
CALCISILTITE(60%):lt olv gy-olv gy,med lt gy,aren g/t vf CLCAR,tr liths,tr vf qtz grs,tr carb spks,sft-frm,sbbkly.

CALCARENITE(40%):lt gy,olv gy,vf-f,mod srt,com calc frags, com glauc,tr mod str calc cmt, mnr foss frags,rr vf qtz grs, fri-mod hd,rr hd,sbbkly-sbfiss.

CALCILUTITE(90%):med gy,olv gy,rr lt gy,tr liths,tr glauc, sft,rr frm,sbbkly-rr amor.

CALCARENITE(10%):lt gy,olv gy,vf-f,mod srt,com calc frags, com glauc,tr mod str calc cmt, mnr foss frags,rr vf qtz grs, fri-mod hd,rr hd,sbbkly-sbfiss.

500 50 5 .5 100 1K 10K 500 5K 100K 1000K



2210  
 2220 (1684.7)  
 2230  
 2240 (1698.4)  
 2250  
 2260 (1712.1)  
 2270  
 2280 (1725.8)  
 2290  
 2300 (1739.6)  
 2310  
 2320 (1753.3)  
 2330

WOB: 25-30klbs  
 RPM: 160  
 SPP: 286psi  
 FLW: 700pm

MW: 11.80  
 EV: 75  
 PV: 43  
 YP: 24  
 O/W: 69.1/30.9  
 HTHP: -72  
 WPS: 248,807  
 CI: 48,780

2229.25mMD(1691.7mTVD)  
 46.82°inc 17.93°az

100 / Tr

2258.63mMD(1711.9mTVD)  
 46.53°inc 17.96°az

100 / tr

2288.12mMD(1732.2mTVD)  
 46.67°inc 17.59°az

2317.11mMD(1752.1mTVD)  
 46.59°inc 15.96°az

CALCILUTITE: med gy, olv gy, rr lt gy, tr liths, tr glauc, tr dissem pyr, tr nod pyr, sft, rr frm, sbbiky-rr amor.

CALCILUTITE: med gy, olv gy, rr lt gy, slty g/t CLCSLT i/p, tr liths, tr glauc, tr dissem pyr, tr nod pyr, sft, rr frm, sbbiky-rr amor.

GZG Probe removed from flow trough by rig crew to clean out trough.

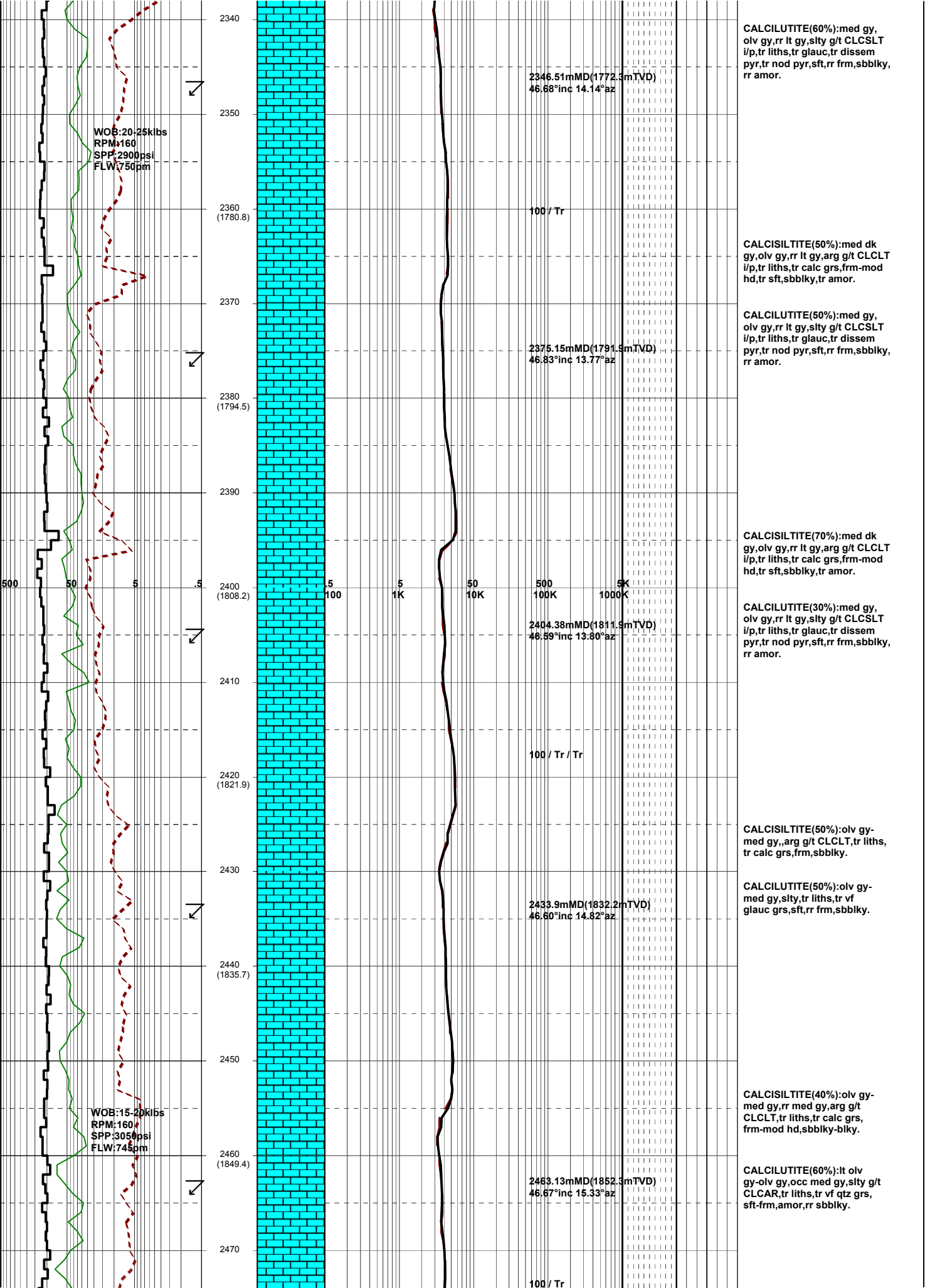
CALCISILTITE(60%): med dk gy, olv gy, rr lt gy, arg g/t CLCLT i/p, tr liths, tr calc grs, frm-mod hd, tr sft, sbbiky, tr amor.

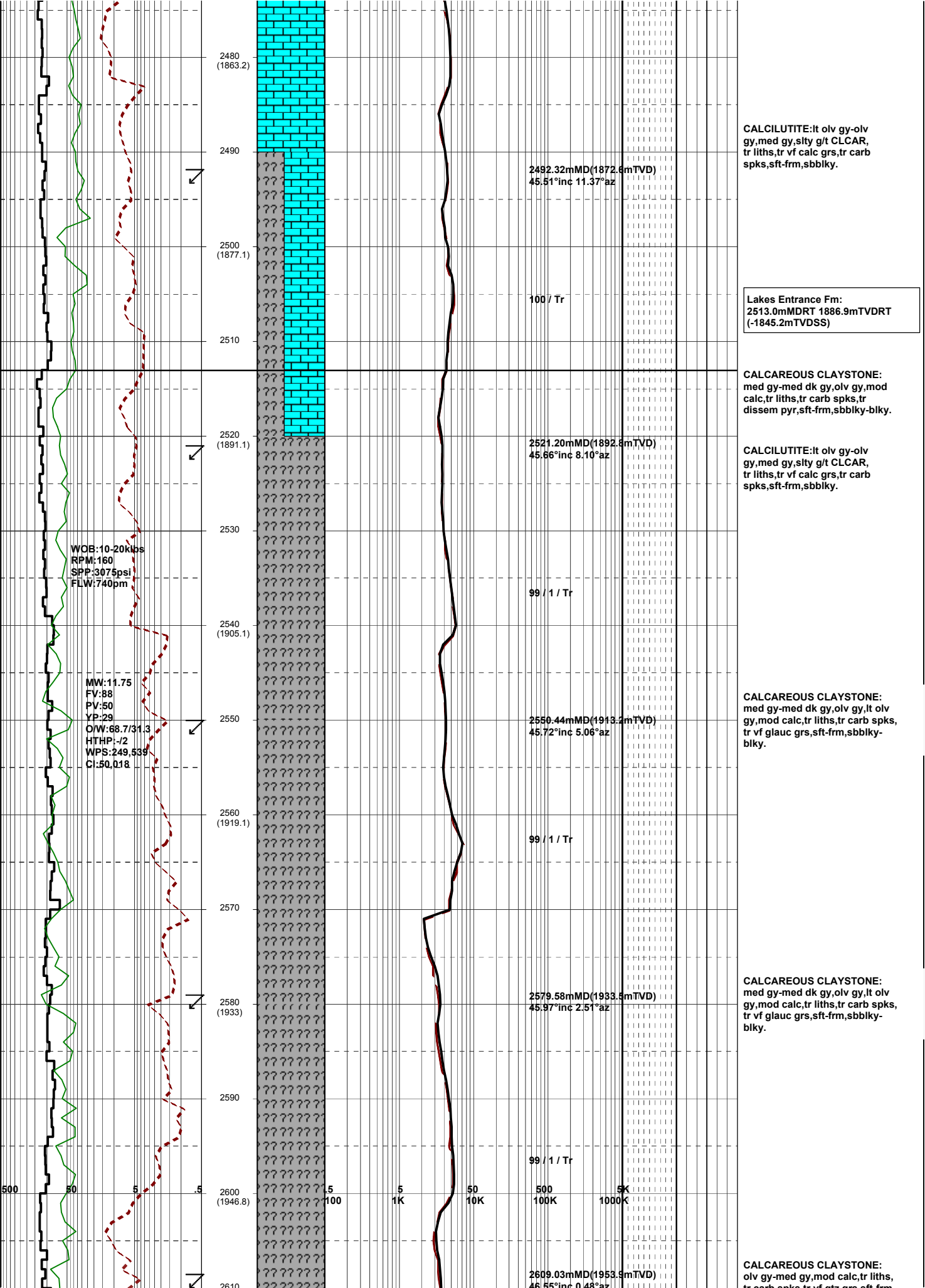
CALCILUTITE(40%): med gy, olv gy, rr lt gy, slty g/t CLCSLT i/p, tr liths, tr glauc, tr dissem pyr, tr nod pyr, sft, rr frm, sbbiky, rr amor.

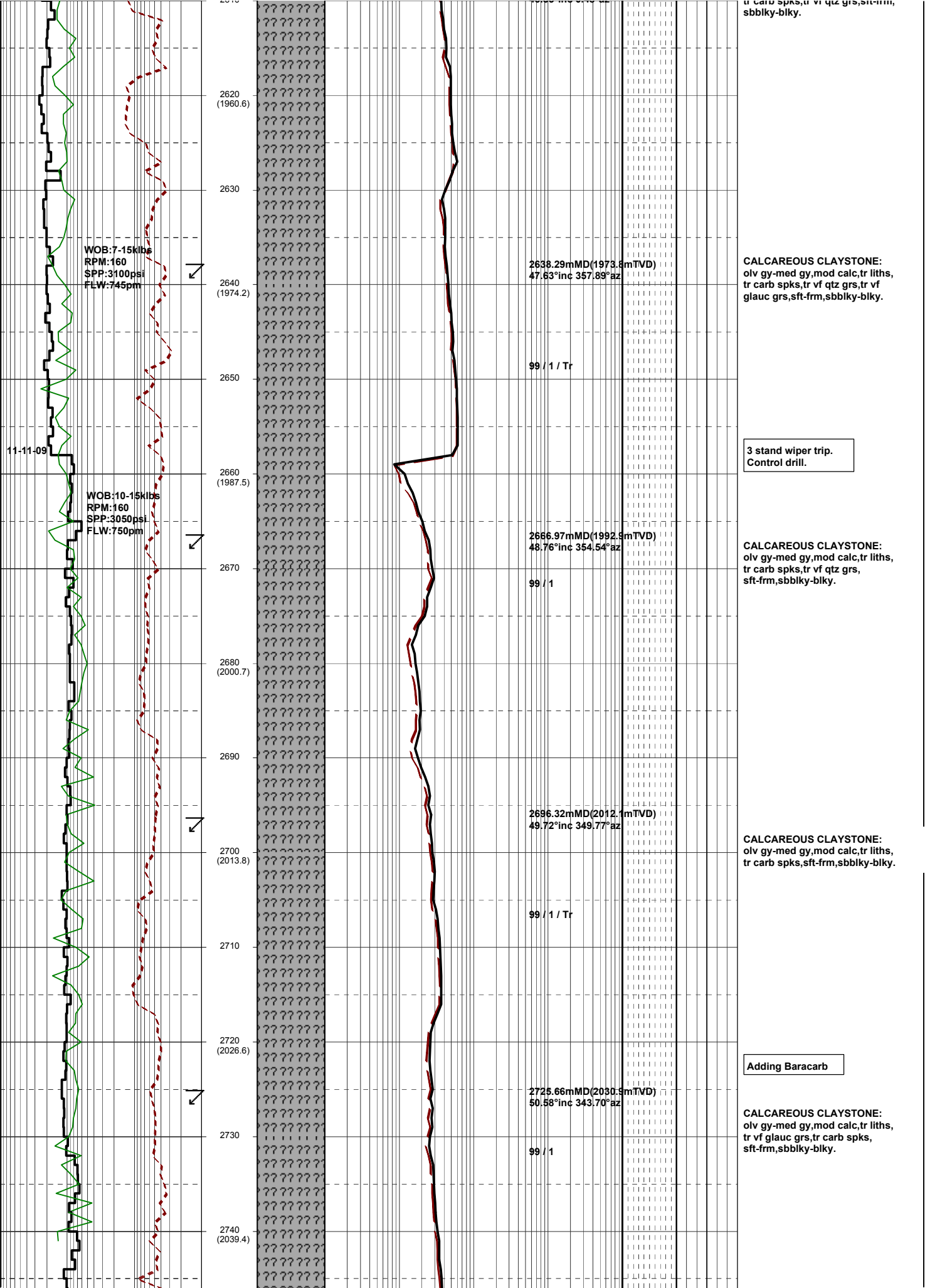
CALCISILTITE(40%): med dk gy, olv gy, rr lt gy, aren g/t CLCLT i/p, tr liths, tr calc grs, frm-mod hd, tr sft, sbbiky, tr amor.

CALCILUTITE(60%): med gy, olv gy, rr lt gy, slty g/t CLCSLT i/p, tr liths, tr glauc, tr dissem pyr, tr nod pyr, sft, rr frm, sbbiky, rr amor.

CALCISILTITE(40%): med dk gy, olv gy, rr lt gy, arg g/t CLCLT i/p, tr liths, tr calc grs, frm-mod hd, tr sft, sbbiky, tr amor.









WOB:7-15klbs  
RPM:160  
SPP:3100psi  
FLW:750pm

2750  
2760  
(2051.2)  
2770  
2780  
(2064.4)  
2790

2754.77mMD(2049.5mTVD)  
50.25°inc 340.00°az

**CALCAREOUS CLAYSTONE:**  
olv gy-med gy,mod calc,tr liths,  
tr carb spks,sft frm,rr mod hd,  
sbbiky-blky.

